



Da-Lite projection screens

FOR YOUR IMAGE™



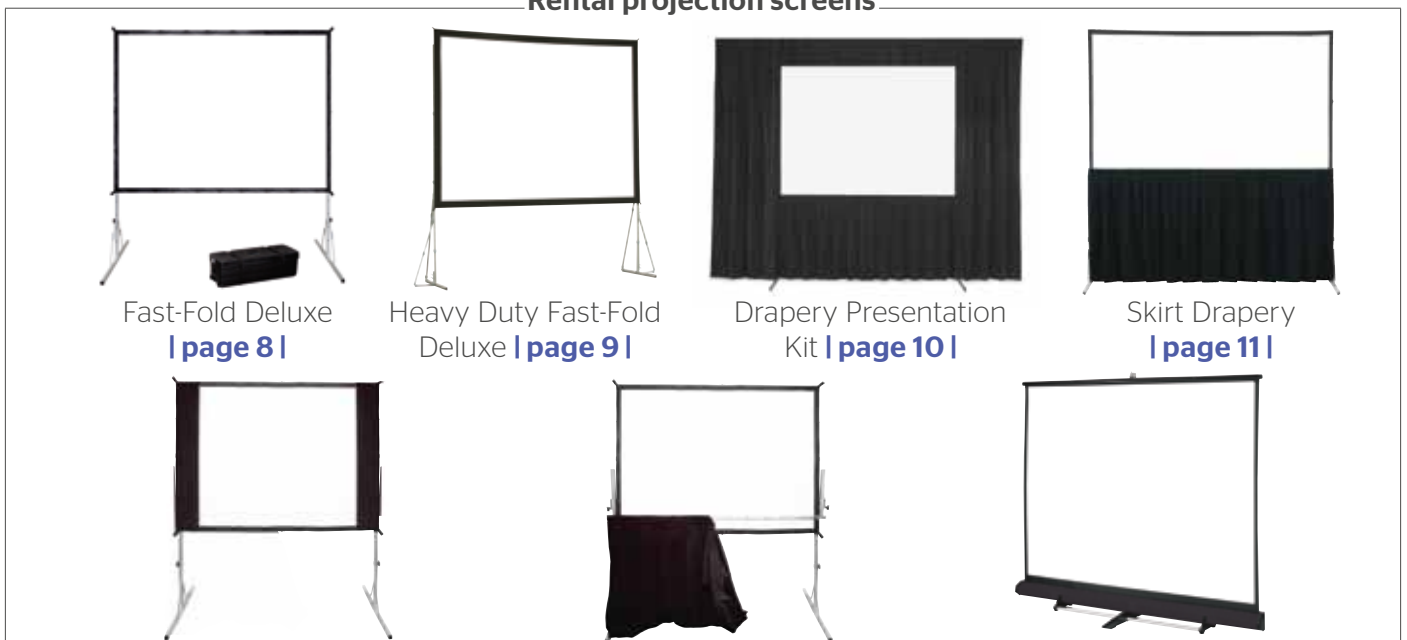
Content

Large venue projection screens



Arena Electrol (JumboKing) | [page 4](#) | Studio Electrol (GiantKing) | [page 5](#) | GiantScreen Electrol | [page 6](#) |

Rental projection screens



Fast-Fold Deluxe
[page 8](#) |

Heavy Duty Fast-Fold
Deluxe | [page 9](#) |

Drapery Presentation
Kit | [page 10](#) |

Skirt Drapery
[page 11](#) |

Masking Panels | [page 11](#) |

Adjustable Skirt Bar | [page 11](#) |

Carpeted Floor Screen | [page 12](#) |

Fixed frame projection screen



Series 200 / Series 300 | [page 14](#) |

Rear projection screens



Da-Plex | [page 16](#) |

Holo Screen | [page 17](#) |

Da-Lite Projection Screens for Large Venues

Building large dimension projection screens demands craftsmanship. For more than 100 years Da-Lite has gained experience constructing large motorized projection screens for large venues. Every projection screen produced is hand built and handled with a passion for quality, durability and safety.

Quality

We use the very best projection surfaces in our projection screens to obtain the best possible projection results. Furthermore we build our screens with durable materials to ensure a quality projection solution.

Durability

For the construction of our large dimension projection screens we use aluminum and steel components to ensure quality performance for years to come.

Safety

All electric large dimension projection screen motors are equipped with an automatic thermal overload cut-off and an electric brake to prevent coasting.

Customization

Large dimension projection screens are installed in various locations such as conference centers, auditoriums, concert halls and theatres. To obtain the best projection result it is imperative that the screen exactly fits the room and the projection requirements. Since our projection screens are hand built we can customize every screen in our extensive range to ensure the optimal projection solution.



Arena Electrol

Motorized projection screen - 12 meters wide by 6 meters height maximum



Customized to
your request



The Arena Electrol® is the solution to your large venue motorized projection screen needs.

- Robust case with a powerful motor and Polichinelle, which is a unique motorized cable and pulley system.
- The Polichinelle system guarantees a safe, taut and horizontal screen projection surface even in the largest sizes.
- The case and the projection screen surface can be made to exactly the right size.
- Available with matte white or matte white Sound projection screen surfaces.
- The Arena Electrol is supplied with a RF remote control as standard.
- The screen is mounted using mounting brackets on the top or to the rear of the case. Depending on the length of the case, the screen is supplied with up to four brackets.
- Also available with a rear projection screen surface in addition to matte white. The seam in the rear projection screen surface may be slightly visible under projection.
- The motor is equipped with electric locks to prevent inadvertent unrolling and features thermal overload cut-off.

Polichinelle System

In a standard projection screen, the weight of the slat bar, along with other elements, ensure that the projection screen surface remains properly tensioned. The Polichinelle system reverses the usual situation to achieve the correct tension. With this system, the projection screen surface rolls up around the slat bar which is retracted by two steel cables. This system can be adjusted both in the case and the slat bar, ensuring that the projection screen surface is smooth and taut under tension. The Polichinelle System ensures the flattest possible screen surfaces for sizes over 8 meters wide and is the ideal choice for auditoriums, theaters and other large venues.



Matte White projection surface in this projection screen is a vinyl based material without black backing.

Studio Electrol

Motorized projection screen - 10 meters wide by 6 meters height maximum



The Studio Electrol is ideal for large screen applications including auditoriums, stages, arenas and multi-purpose rooms.

- Robust case with a powerful motor.
- Limit switches are factory set guaranteeing a long life span. The Studio Electrol is supplied with a wall switch.
- The screen is mounted using two flexible mounting brackets on the top or to the rear of the case. An optional third mounting bracket is available.
- The motor is equipped with electric locks to prevent inadvertent unrolling and features thermal overload cut-off.
- The underside of the case is open as standard. A closed version can be supplied at additional cost.
- Also available with a rear projection screen surface in addition to matte white. The seam in the rear projection screen surface may be slightly visible under projection.
- The case and the projection screen surface can be made to exactly the right size.



Aluminium case



Rounded slat bar

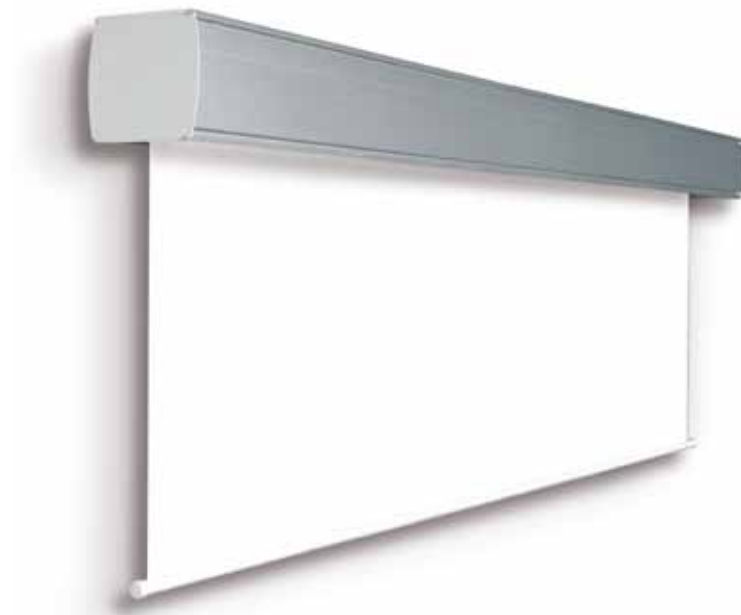


Dimensions and product codes on page 19

Matte White projection surface in this projection screen is a vinyl based material without black backing.

GiantScreen Electrol

Motorized projection screen - 7 meters wide by 5 meters height maximum



The first choice for medium to large size venues.

- Robust case with a powerful motor.
- Limit switches are factory set guaranteeing a long life span. The GiantScreen Electrol is supplied with a wall switch.
- The projection screen is mounted to the wall and/or ceiling using two brackets which can be positioned flexibly. The brackets can be positioned up to one meter from each side.
- The motor is equipped with electric locks to prevent inadvertent unrolling and features thermal overload cut-off.
- The underside of the case is open as standard. A closed version can be supplied at additional cost.
- Also available with a rear projection screen surface in addition to matte white. The seam in the rear projection screen surface may be slightly visible under projection.
- The case and the projection screen surface can be made to exactly the right size.



Dimensions and product codes on page 19



Robust case with a powerful motor.



Adjustable mounting brackets



Matte White projection surface in this projection screen is a vinyl based material without black backing.



Building large dimension projection screens demands craftsmanship.



Fast-Fold® Deluxe

Portable folding screen up to 427 cm widths for use at any location



Lightweight folding frame which is easy to set up without the use of tools.

- The Fast-Fold® Deluxe consists of a folding aluminium frame (32 x 32 mm), two detachable legs and a detachable projection screen surface which is attached to the frame by snaps.
- The Matte White projection screen surface includes black backing as standard.
- The frame height is adjustable to any required viewing height in increments of 15 cm.
- The Fast-Fold® Deluxe is supplied in a sturdy plastic travel case on wheels as standard.
- Drapery Presentation Kit, which is easy to attach to the frame, is available separately.
- All projection screen surfaces are seamless.
- Flexibility for use in front or rear applications with Matte White, Da-Tex®, Dual Vision and Ultra Wide Angle projection surfaces.

Also available:

- Replacement screen surfaces

Rugged aluminium 32 mm square tubing



**Snap Latch
hinge design**

Heavy Duty Fast-Fold® Deluxe

Foldable projection screen – 8.3 meters wide by 5.5 meters height maximum



Portable and very sturdy, foldable screen up to 838 cm widths for large scale applications. Ideal for events.

- The Heavy Duty Fast-Fold® Deluxe consists of a sturdy, folding aluminum frame (89 x 32 mm), two detachable heavy duty (HD) legs and a detachable projection screen surface which is attached to the frame by snaps.
- The frame is easy to set up without the use of tools.
- Sturdy legs with side supports for extra stability.
- The frame height is adjustable to any required viewing height in increments of 15 cm.
- Projection screen surfaces are seamless up to heights of 4.8 meters.
- The Matte White projection screen surface includes black backing as standard.
- Extra-wide black border (15 cm) on projection screen surfaces.
- The Heavy Duty Fast-Fold® Deluxe is supplied with two or three robust plastic travel cases on wheels.
- Drapery Presentation Kit, which is easy to attach to the frame, is available separately.
- The frame and screen surface can be custom made to exactly the right size. Borders can be optionally supplied in white.

Also available:

- Replacement screen surfaces



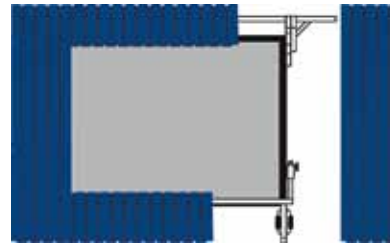
Speedy Cranks, no tools required



Snap Latch hinge design

Drapery Presentation Kit

Provide a professional finish to your screen



 Dimensions and product codes on page 24



The drapery attaches with snaps

Ultra velour fabric



- The black Ultra Velour Drapery Presentation Kit provides a professional finish to the Heavy Duty Fast-Fold® Deluxe and Fast-Fold® Deluxe screens.
- Use a complete kit to create a uniform and aesthetically pleasing presentation system.
- The drapery attaches with snaps to Heavy Duty Fast-Fold® Deluxe and Fast-Fold® Deluxe drapery hardware. Optional black hardware is available.
- Drapery is fully box pleated for a polished appearance.

- The kit includes a valance bar, 36 cm high valance drape, wing bars, 81 cm wide wing drapes, a 114 cm long skirt that attaches to the screen surface without tools and a plastic travel case on wheels.
- In combination with the Fast-Fold® Deluxe, Heavy Duty legs are recommended to be used with the Drapery Presentation Kit for stability.
- The Ultra Velour fabric is inherently flame retardant and machine washable.

Skirt Drapery

Flame retardant & machine washable

- Fire retardant black Ultra Velour Drapery attaches with snaps to Heavy Duty Fast-Fold® Deluxe and Fast-Fold® Deluxe.
- The Skirt Drapery is standard 114 cm long.
- A customised skirt is available when the skirt has to be longer.
- The Ultra Velour fabric is inherently flame retardant and machine washable.



Easy set-up with studs



Ultra velour fabric

 Dimensions and product codes on page 25

Masking Panels

Double the functionality of your screen



- Drapery Masking panels allow a native 16:9 Fast-Fold® screen to be properly masked to a 4:3 format, in effect doubling the functionality of the screen.
- Masking panels simply attach with Velcro® at the top and snap into place at the bottom of the screen to snap studs along the black binding.
- The masking panels are inherently flame retardant.



Double functionality: from 16:9 to 4:3 format



Adjustable Skirt Bar

Change and create the aspect ratio of your choice



- An optional Adjustable Skirt Bar is available to change the aspect ratio.
- The Adjustable Skirt Bar can be attached to the frame of the Heavy Duty Fast-Fold® Deluxe or Fast-Fold® Deluxe without tools.
- The Adjustable Skirt Bar can be moved along the bottom of the screen to create the required aspect ratio.
- The Adjustable Skirt Bar must be used in conjunction with Skirt Drapery to achieve masking.



Adjustable Skirt Bar attaches with snaps



Adjustable Skirt Bar bracket

Carpeted Floor Screen

The perfect solution for any presentation



A mobile solution ideal for rental, staging and hospitality applications.

- The Carpeted Floor Screen is positioned on the sturdy Floor Stand to complete a mobile solution ideal for rental, staging and hospitality applications.
- Carpeted Floor Screen stands up to the demands of any presentation.
- Screen pulls up from the case with reduced spring tension for easy raising and lowering.
- Black industrial grade carpeted case withstands the nicks and scratches of frequent use and transportation.
- The Floor Stand cradles the screen securely in place and offers a rigid, stable base. The Floor Stand needs to be ordered separately with the purchase of a Carpeted Floor Screen.

Accessories:

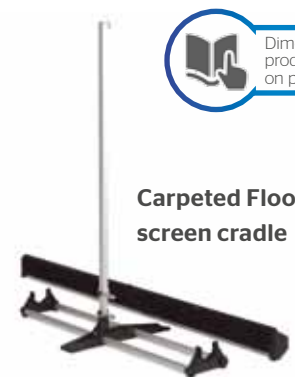
Floor Stand - 10830363



Carpeted Floor screen case



Carpeted Floor screen telescopic



Carpeted Floor screen cradle



Dimensions and product codes on page 28



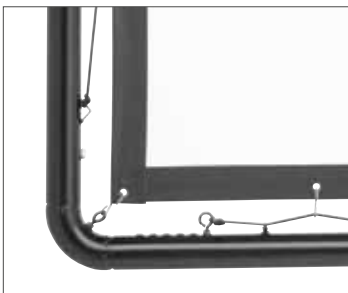
Series 200 / Series 300

Lace and grommet screen - 27 meters wide maximum

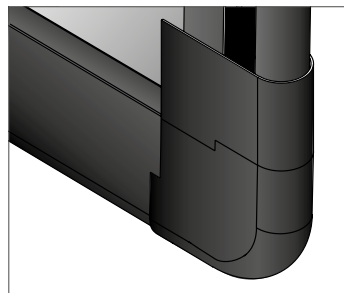


Heavy duty lace and grommet tensioned screen up to 27 metres wide in front projection and 12 metres wide in rear projection, either straight or curved.

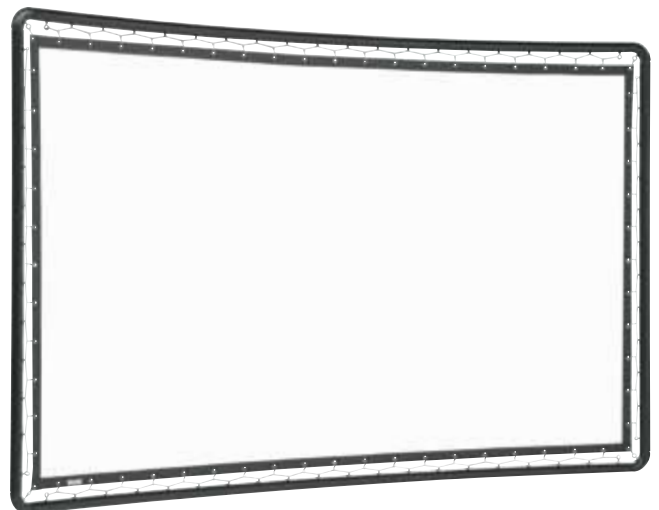
Customized to
your request

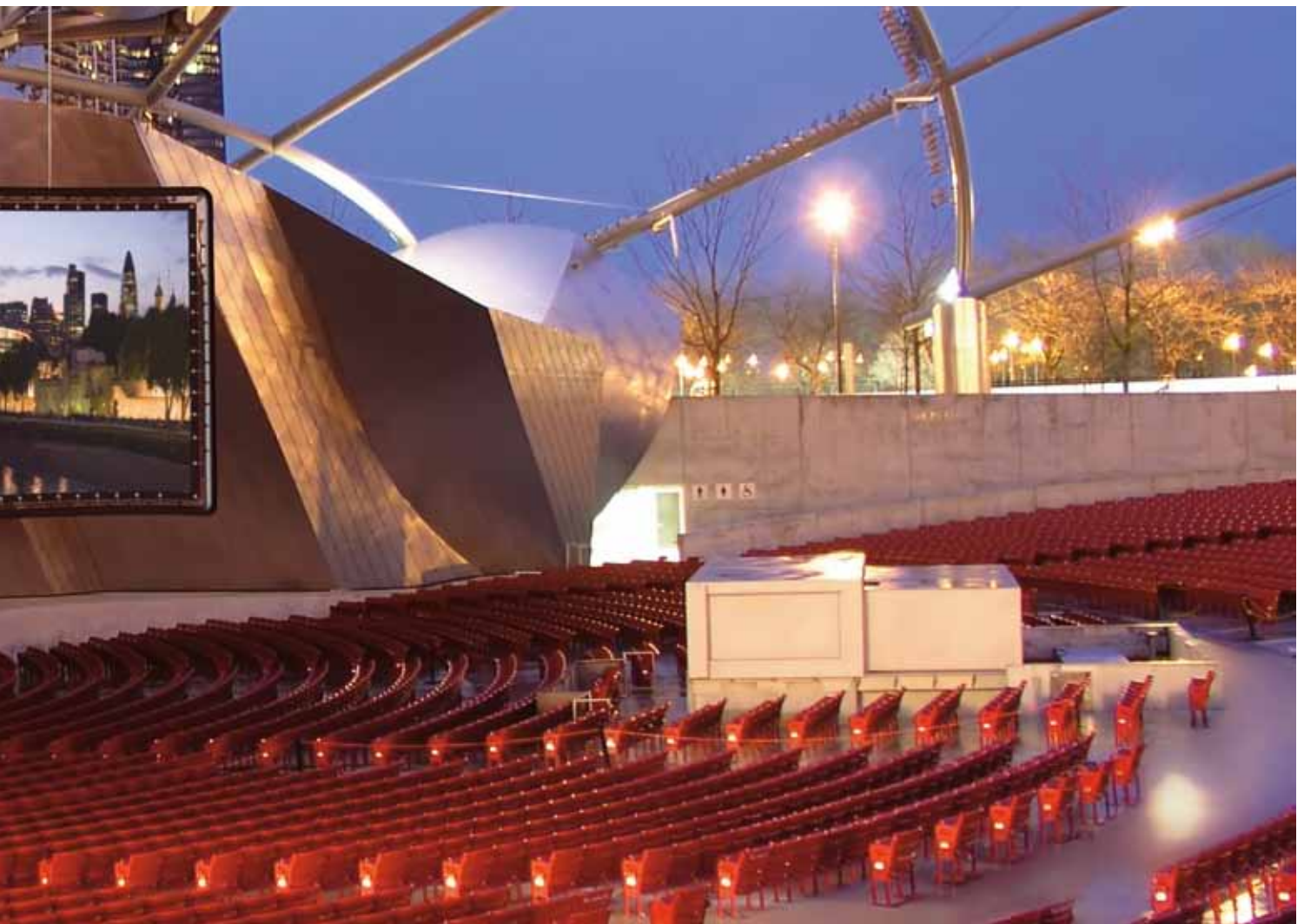


**Robust tubular
frame construction**



**The frame can be
finished with a black
velvet edging.**





- The screen's robust tubular frame construction keeps the fabric taut, making it possible for the screen to be suspended freely from a truss construction for large events.
- The screen is also well suited for wall mounting and can even be mounted on legs.
- The Series 200 and 300 will be customised to project specifications.
- The curved version can be supplied with any degree of curvature based on a single axis.
- Suitable for any situation requiring special projection solutions, including custom shapes and sizes such as circles, trapezoid shapes and triangles.
- The frame can be attractively finished with a black velvet edging, whereby the black velvet prevents reflection and serves to absorb projected light.
- The frame is constructed of aluminium tubing with pre-mounted and pre-positioned tensioning cords and "S" hooks for easy mounting which are concealed by the velvet edging.
- The tubing diameter for the Series 200 is 5.1 cm with screens available up to a width of 9 metres.
- The tubing diameter for the Series 300 is 7.6 cm with screens available up to a width of 27 metres.
- The curved Series 200 or 300 is ideal for simulation and demonstration applications.
- The screen can be optionally packed in robust plastic travel cases on wheels.

Da-Plex

Da-Plex is available in standard sizes up to 251 cm and 427 cm wide



Gain; Indicates Goniophotometer reflectance readings. The higher the number, the greater light transmitted to the audience.



Viewing angle; number indicates the optimal width of the ideal full viewing angle.



Da-Plex is a rigid rear projection solution based on acrylic screen materials.

- Acrylic rigid screen materials offer high resolution diffusive reflection for permanent installations.
- The thin diffusion coating is permanently bonded to the acrylic substrate and cannot peel off like laminated film or vinyl based diffusion screens.
- Acrylic substrate for breakage resistance, lightweight, high optical quality, ease of handling and superior transmission.
- Da-Plex is available in standard sizes up to 251 cm and 427 cm wide. Larger sizes available upon request.
- The screen substrate is made of a clear acrylic plastic.
- The substrate has an optical coating on one surface that does not exceed 0.1 mm in thickness.
- Da-Plex rear projection screens are to be mounted with the coated surface towards the audience.
- Standard and Self-Trimming factory frame options are available.
- Da-Plex is standard with DA-100. Other coatings are available upon request.

Self trimming factory installed frame

Eliminates the need for finish trim for fast, easy

installation. Built-in 3.8 cm. wide molding to hide opening. Black anodized finish. Frame insert size equals screen viewing area plus 7.3 cm.

Standard factory installed frame

Impressive architectural design adds sophistication to any installation. 2.5 x 4.5 cm rectangular tube base. Dovetail frame eliminates light leakage. Black anodized finish. Frame insert size equals screen viewing area plus 10 cm.

Da-Plex Optical coatings

DA-100	DA-130	DA-150	DA-180	DA-230
1.0	1.3	1.5	1.8	2.3
70°	68°	64°	60°	50°

Wide Angle Optical coatings

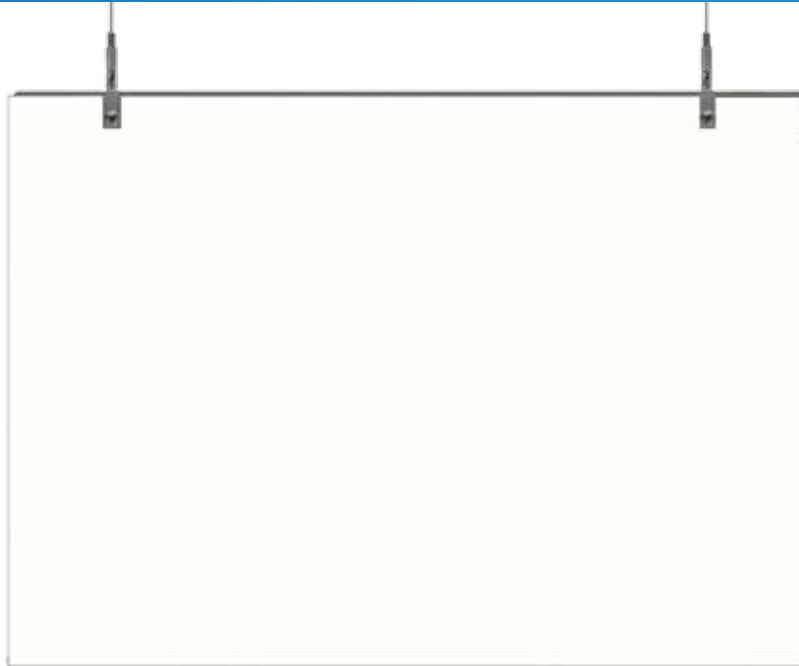
DA-75	DA-100
0,75	1.0
156°	104°



Dimensions and product codes on page 29

Holo Screen

The Holo Screen is available in sizes up to 183 x 244 cm



The Holo Screen is designed for point-of-sale applications in retail stores, window displays, airports, banks and other high traffic areas.

- The Holo Screen is a holographic rear projection screen for point-of-sale applications in retail stores, window displays, airports, banks and other high traffic areas. The transparent display allows viewers to look at and see through the screen.
- The Holo Screen is a single piece acrylic rear projection screen with a specially designed optical coating. This optical coating bonds to the acrylic so it will not crack, peel or become discolored.
- The Holo Screen features an advanced holographic technology that displays images rear projected from 18-35 degrees. The result is a remarkably bright and clear image - even in brightly lit environments.
- The Holo Screen is available in sizes up to 183 x 244 cm. Custom sizes are available upon request.
- The Holo Screen includes an aluminum extruded top and bottom frame for ease of installation. Adjustable and lockable fasteners and stainless steel cables complete the installation.



Index of all charts

Large venue projection screens

Arena Electrol (JumboKing)	customized to your request
Studio Electrol (GiantKing)	19
GiantScreen Electrol	19

Rental projection screens

Fast-Fold® Deluxe	20/21
Fast-Fold® Deluxe replacement screen surfaces	20/21
Heavy Duty Fast-Fold® Deluxe	22/23
Heavy Duty Fast-Fold® Deluxe replacement screen surfaces	22/23
Drapery Presentation Kit for Fast-Fold Deluxe	24
Drapery Presentation Kit for Heavy Duty Fast-Fold Deluxe	24
Skirt Drapery for Fast-Fold® Deluxe	25
Skirt Drapery for Heavy Duty Fast-Fold® Deluxe	25
Masking Panels for Fast-Fold® Deluxe	26
Masking Panels for Heavy Duty Fast-Fold® Deluxe	26
Adjustable Skirt Bar for Fast-Fold® Deluxe	27
Adjustable Skirt Bar for Heavy Duty Fast-Fold® Deluxe	27
Carpeted Floor Screen	28

Fixed frame projection screens

Series 200/ Series 300	customised to your request
------------------------	----------------------------

Rear projection screens

Da-Plex	29
Holo Screen	29



Studio Electrol (page 4)

Aspect Ratio	Overall Dimensions	Overall Case Length	Net Weight	Screen Surfaces		
				Matte White	Matte White Sound	Rear Projection
	H x W cm	mm	kg	Product Code	Product Code	Product Code
16:10	469 x 750	7790	345	10130791	10130795	10130799
	500 x 800	8290	358	10130029	10130043	10130800
	532 x 850	8790	383	10130792	10130796	10130801
	563 x 900	9290	400	10130793	10130797	10130802
	594 x 950	9790	420	10130794	10130798	10130803
4:3	525 x 700	7290	330	10130784	10130786	10130788
	562 x 750	7790	350	10130785	10130787	10130789
	600 x 800	8290	360	10130033	10130046	10130790
Other	600 x 700	7290	335	10130028	10130042	10130804
	550 x 800	8290	359	10130031	10130044	10130805
	500 x 900	9290	390	10130034	10130047	10130806
	600 x 900	9290	400	10130037	10130049	10130807
	500 x 1000	10290	430	10130038	10130050	10130808
	550 x 1000	10290	435	10130039	10130051	10130809
	600 x 1000	10290	440	10130040	10130052	10130810



GiantScreen Electrol (page 6)

Aspect Ratio	Overall Dimensions	Overall Case Length	Net Weight	Screen Surfaces		
				Matte White	Matte White Sound	Rear Projection
	H x W cm	mm	kg	Product Code	Product Code	Product Code
16:10	375 x 600	6200	144	10130771	10130774	10130777
	407 x 650	6700	153	10130772	10130775	10130778
	438 x 700	7200	163	10130773	10130776	10130779
4:3	450 x 600	6200	142	10130061	10130769	10130770
Other	500 x 600	6200	147	10130084	10130780	10130782
	500 x 700	7200	168	10130071	10130781	10130783

Fast-Fold® Deluxe (page 8)

Aspect Ratio	Overall Dimensions	Viewing Area	Nominal Diagonal		Min. height	Max. height
	H x W cm	H x W cm	cm	inches	cm	cm
16:10	157 x 244	147 x 234	296	117	162	292
	174 x 274	164 x 264	330	130	179	309
	196 x 305	186 x 295	370	146	201	331
	234 x 366	224 x 356	442	173	239	369
16:9	142 x 244	132 x 234	269	106	147	277
	157 x 274	147 x 264	302	119	162	272
	175 x 305	165 x 295	338	133	180	310
	211 x 366	201 x 355	404	159	216	346
	244 x 427	234 x 417	483	190	259	389
4:3	160 x 213	150 x 203	254	100	165	295
	183 x 244	173 x 234	305	120	188	316
	228 x 305	218 x 295	381	150	233	363
	274 x 366	264 x 356	457	180	279	409
	320 x 427	310 x 417	508	200	325	500
1:1	213 x 213	203 x 203			218	348
	244 x 244	234 x 234			249	379
	274 x 274	264 x 264			279	409
	305 x 305	295 x 295			310	485
	366 x 366	356 x 356			371	546
3:2	213 x 320	203 x 310			218	348



	Screen Complete				Replacement screen surfaces			
	Matte White	Da-Tex®	Dual Vision	Ultra Wide Angle	Matte White	Da-Tex®	Dual Vision	Ultra Wide Angle
	prod.code	prod.code	prod.code	prod.code	prod.code	prod.code	prod.code	prod.code
	10530635	10530636	10530637	10530638	10530681	10530682	10530683	10530684
	10530639	10530640	10530641	10530642	10530685	10530686	10530687	10530688
	10530643	10530644	10530645	10530646	10530689	10530690	10530691	10530692
	10530647	10530648	10530649	10530650	10530693	10530694	10530695	10530696
	10530236	10530240	10530627	10530628	10530244	10530248	10530673	10530674
	10530237	10530241	10530629	10530630	10530245	10530249	10530675	10530676
	10530238	10530242	10530631	10530632	10530246	10530250	10530677	10530678
	10530239	10530243	10530633	10530634	10530247	10530251	10530679	10530680
	10530819	10530820	10530821	10530822	10530823	10530824	10530825	10530826
	10530069	10530067	10530617	10530618	10530001	10530011	10530663	10530664
	10530071	10530070	10530619	10530620	10530003	10530013	10530665	10530666
	10530080	10530079	10530621	10530622	10530006	10530017	10530667	10530668
	10530096	10530099	10530623	10530624	10530022	10530026	10530669	10530670
	10530089	10530087	10530625	10530626	10530010	10530020	10530671	10530672
	10530074	10530073	10530651	10530652	10530002	10530012	10530697	10530698
	10530083	10530082	10530653	10530654	10530004	10530015	10530699	10530700
	10530100	10530101	10530655	10530656	10530024	10530025	10530701	10530702
	10530085	10530084	10530657	10530658	10530007	10530018	10530703	10530704
	10530092	10530091	10530659	10530660	10530009	10530019	10530705	10530706
	10530077	10530076	10530661	10530662	10530005	10530016	10530707	10530708

Heavy Duty Fast-Fold® Deluxe (page 9)

Aspect Ratio	Overall Dimensions	Viewing Area	Nominal Diagonal		Min. height	Max. height	Number of suitcases
	H x B cm	H x B cm	cm	feet	cm	cm	
16:10	285 x 437	255 x 407	481	16	320	502	2
	335 x 518	305 x 488	576	19	370	522	2
	374 x 579	344 x 549	649	21	409	607	2
	412 x 640	382 x 611	721	24	447	690	2
	437 x 681	407 x 651	768	25	472	700	2
	488 x 762	458 x 732	864	28	523	721	3
	535 x 838	505 x 808	953	31	570	813	3
16:9	259 x 437	229 x 406	467	15	294	492	2
	305 x 518	274 x 488	559	18	340	507	2
	335 x 579	305 x 549	622	20	370	583	2
	373 x 640	343 x 610	700	23	408	667	2
	396 x 681	366 x 650	747	25	411	685	2
	442 x 762	411 x 732	838	28	477	705	3
	488 x 838	458 x 808	934	31	523	782	3
4:3	305 x 396	274 x 366	457	15	310	523	2
	351 x 457	320 x 427	533	17	355	595	2
	396 x 518	366 x 488	610	20	401	678	2
	488 x 640	457 x 610	762	25	493	784	2
	579 x 762	549 x 732	915	30	584	950	3



	Screen Complete				Replacement screen surfaces			
	Matwit	Da-Tex®	Dual Vision	Ultra Wide Angle	Matwit	Da-Tex®	Dual Vision	Ultra Wide Angle
	prod.code	prod.code	prod.code	prod.code	prod.code	prod.code	prod.code	prod.code
	10530522	10530523	10530524	10530525	10530589	10530590	10530591	10530592
	10530526	10530527	10530528	10530529	10530593	10530594	10530595	10530596
	10530530	10530531	10530532	10530533	10530597	10530598	10530599	10530600
	10530534	10530535	10530536	10530537	10530601	10530602	10530603	10530604
	10530538	10530540	10530541	10530542	10530605	10530606	10530607	10530608
	10530543	10530544	10530545	10530546	10530609	10530610	10530611	10530612
	10530547	10530548	10530549	10530550	10530613	10530614	10530615	10530616
	10530494	10530495	10530496	10530497	10530561	10530562	10530563	10530564
	10530498	10530499	10530500	10530501	10530565	10530566	10530567	10530568
	10530502	10530503	10530504	10530505	10530569	10530570	10530571	10530572
	10530506	10530507	10530508	10530509	10530573	10530574	10530575	10530576
	10530510	10530511	10530512	10530513	10530577	10530578	10530579	10530580
	10530514	10530515	10530516	10530517	10530581	10530582	10530583	10530584
	10530518	10530519	10530520	10530521	10530585	10530586	10530587	10530588
	10530465	10530470	10530484	10530485	10530475	10530476	10530551	10530552
	10530466	10530471	10530486	10530487	10530041	10530033	10530553	10530554
	10530467	10530472	10530488	10530489	10530038	10530034	10530555	10530556
	10530468	10530473	10530490	10530491	10530031	10530035	10530557	10530558
	10530469	10530474	10530492	10530493	10530039	10530036	10530559	10530560



Drapery Presentation Kit (page 10)

Heavy Duty Fast-Fold® Deluxe Presentation kit

Aspect Ratio	Overall Dimensions	
	H x W cm	prod.code
16:10	285 x 437	10830249
	335 x 518	10830250
	374 x 579	10830251
	412 x 640	10830252
	437 x 681	10830253
	488 x 762	10830254
	535 x 838	10830255
16:9	259 x 437	10830242
	305 x 518	10830243
	335 x 579	10830244
	373 x 640	10830245
	396 x 681	10830246
	442 x 762	10830247
	488 x 838	10830248
4:3	305 x 396	10830237
	351 x 457	10830238
	396 x 518	10830239
	488 x 640	10830240
	579 x 762	10830241

Fast-Fold® Deluxe Presentation kit

Aspect Ratio	Overall Dimensions	
	H x W cm	prod.code
16:10	157 x 244	10830333
	174 x 274	10830334
	196 x 305	10830335
	234 x 366	10830336
16:9	142 x 244	10830329
	157 x 274	10830330
	175 x 305	10830331
	211 x 366	10830332
	244 x 427	10830460
4:3	160 x 213	10830324
	183 x 244	10830325
	228 x 305	10830326
	274 x 366	10830327
	320 x 427	10830328
	213 x 213	10830337
1:1	244 x 244	10830338
	274 x 274	10830339
	305 x 305	10830340
	366 x 366	10830341
	213 x 320	10830342

Skirt Drapery (page 10)

Heavy Duty Fast-Fold® Deluxe Skirt Drapery

Aspect Ratio	Overall Dimensions	
	H x W cm	prod.code
16:10	285 x 437	10830377
	335 x 518	10830378
	374 x 579	10830379
	412 x 640	10830380
	437 x 681	10830381
	488 x 762	10830382
	535 x 838	10830383
16:9	259 x 437	10830370
	305 x 518	10830371
	335 x 579	10830372
	373 x 640	10830373
	396 x 681	10830374
	442 x 762	10830375
	488 x 838	10830376
4:3	305 x 396	10830365
	351 x 457	10830366
	396 x 518	10830367
	488 x 640	10830368
	579 x 762	10830369



Fast-Fold® Deluxe Skirt Drapery

Aspect Ratio	Overall Dimensions		
	H x W cm	prod.code	
16:10	157 x 244	10830314	
	174 x 274	10830315	
	196 x 305	10830316	
	234 x 366	10830317	
	142 x 244	10830310	
16:9	157 x 274	10830311	
	175 x 305	10830312	
	211 x 366	10830313	
	244 x 427	10830459	
	4:3	160 x 213	10830305
183 x 244		10830306	
228 x 305		10830307	
274 x 366		10830308	
320 x 427		10830309	
1:1		213 x 213	10830318
		244 x 244	10830319
	274 x 274	10830320	
	305 x 305	10830321	
	366 x 366	10830322	
3:2	213 x 320	10830323	



Masking Panels (page 11)

Heavy Duty Fast-Fold® Deluxe Masking Panels

Height Masking panel	Overall dimensions	HDTV Viewing Area	Video Viewing Area	
cm	H x W cm	H x W cm	H x W cm	prod. code
259	259 x 437	259 x 437	229 x 305	10830190
305	305 x 518	274 x 488	274 x 366	10830191
335	335 x 579	305 x 549	305 x 406	10830192
376	376 x 640	343 x 610	343 x 457	10830193
396	396 x 681	366 x 650	366 x 488	10830194
442	442 x 762	411 x 732	412 x 549	10830195
488	488 x 838	457 x 808	457 x 610	10830196

Fast-Fold® Deluxe Masking Panels

Height Masking panel	Overall dimensions	HDTV Viewing Area	Video Viewing Area	
cm	H x W cm	H x W cm	H x W cm	prod. code
142	142 x 244	132 x 234	132 x 175	10830258
157	157 x 274	147 x 264	147 x 196	10830259
175	175 x 305	165 x 295	165 x 221	10830260
211	211 x 366	201 x 356	201 x 267	10830261
244	244 x 427	234 x 417	234 x 312	10830461

Adjustable Skirt Bar (page 11)

Heavy Duty Fast-Fold® Deluxe Adjustable Skirt Bar

Aspect Ratio	Overall Dimensions	
	H x W cm	prod.code
16:10	285 x 437	10830209
	335 x 518	10830210
	374 x 579	10830211
	412 x 640	10830212
	437 x 681	10830213
	488 x 762	10830214
	535 x 838	10830215
16:9	259 x 437	10830202
	305 x 518	10830203
	335 x 579	10830204
	373 x 640	10830205
	396 x 681	10830206
	442 x 762	10830207
	488 x 838	10830208
4:3	305 x 396	10830197
	351 x 457	10830198
	396 x 518	10830199
	488 x 640	10830200
	579 x 762	10830201



Fast-Fold® Deluxe Adjustable Skirt Bar

Aspect Ratio	Overall Dimensions	
	H x W cm	prod.code
16:10	157 x 244	10830271
	174 x 274	10830272
	196 x 305	10830273
	234 x 366	10830274
	142 x 244	10830267
16:9	157 x 274	10830268
	175 x 305	10830269
	211 x 366	10830270
	244 x 427	10830463
4:3	160 x 213	10830262
	183 x 244	10830263
	228 x 305	10830264
	274 x 366	10830265
	320 x 427	10830266
	213 x 213	10830275
1:1	244 x 244	10830276
	274 x 274	10830277
	305 x 305	10830278
	366 x 366	10830279
	213 x 320	10830280
3:2		



Carpeted Floor Screen (page 12)

Accessories	prod. code
Floorstand	10830363

Aspect Ratio	Overall Dimensions	Viewing Area	Nominal Diagonal		Transport Length	Screen Surfaces
			cm	inches		prod.code
4:3	185 x 244	175 x 234	305	120	252	10530801
	231 x 305	221 x 295	381	150	313	10530802
	277 x 366	267 x 356	457	180	374	10530803
1:1	244 x 244				252	10530804
	274 x 274				283	10530805
	305 x 305				313	10530806
	366 x 366				374	10530807



Da-Plex (page 16)

Aspect Ratio	Viewing Area	Nominal Diagonal		Frames	
		cm	inches	Standard Frame prod.code	Self Trimming Frame prod.code
16:9	103 x 183	208	82	10730085	10730102
	114 x 203	234	92	10730086	10730103
	132 x 234	269	106	10730087	10730104
	147 x 264	302	119	10730088	10730105
	165 x 295	338	133	10730089	10730106
	198 x 353	404	159	10730090	10730107
	240 x 427	490	193	10730091	10730108
4:3	91 x 122	152	60	10730075	10730092
	102 x 137	170	67	10730076	10730093
	110 x 147	183	72	10730077	10730094
	128 x 171	213	84	10730078	10730095
	147 x 196	244	96	10730079	10730096
	152 x 203	254	100	10730080	10730097
	183 x 244	305	120	10730081	10730098
	206 x 274	343	135	10730082	10730099
	229 x 305	381	150	10730083	10730100
251 x 335	419	165	10730084	10730101	



Holo Screen (page 17)

Aspect Ratio	Overall Dimensions	Viewing Area	Nominal Diagonal			Holo Screen
	H x W cm	H x W cm	cm	inches		prod.code
16:9	85 x 145	81 x 145	165	65	10	10730126
	99 x 170	95 x 170	196	77	12	10730127
	107 x 183	103 x 183	208	82	13	10730128
	118 x 203	114 x 203	234	92	17	10730129
	136 x 234	132 x 234	269	106	25	10730130
4:3	65 x 81	61 x 81	102	40	4	10730117
	80 x 102	76 x 102	127	50	6	10730118
	95 x 122	91 x 122	152	60	8	10730119
	106 x 137	102 x 137	170	67	10	10730120
	114 x 147	110 x 147	183	72	11	10730121
	132 x 171	128 x 171	213	84	16	10730122
	143 x 196	147 x 196	245	96	21	10730123
	156 x 203	152 x 203	254	100	23	10730124
	187 x 244	183 x 244	305	120	50	10730125



A Milestone Technologies Brand

3100 North Detroit Street
Warsaw, Indiana 46582
P: 574.267.8101 or 800.622.3737
F: 574.267.7804 or 877.325.4832
E: info@da-lite.com
www.da-lite.com

DL-0156 (Rev.1) 09.13
© 2014 Milestone AV Technologies LLC.

Europe, Middle East & Africa:
Milestone AV Technologies B.V.
Franklinstraat 14
6003 DK Weert
The Netherlands
P: +31 (0) 495 580 852
F: +31 (0) 495 580 845
E: emea.da-lite@milestone.com

All Da-Lite screens are made to order,
and can be customized to your needs.
To learn more, visit Da-Lite.com or call
+31 (0) 495 580 852 to chat with a
Da-Lite Customer Service Expert.